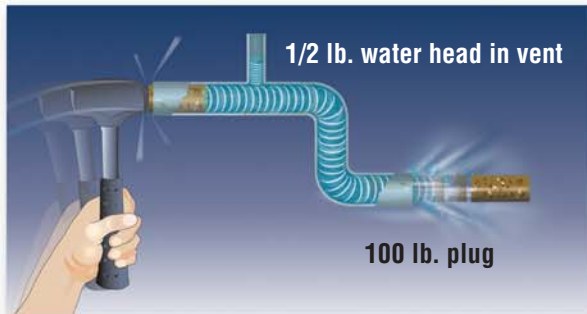


Kinetic Water Ram™

Open Clogged Pipes with Shock Action!

Here's a compact, lightweight tool for quickly opening clogged sinks, toilets, and tubs. It handles rust, grease, sediment, and scale in lines up through 4" in diameter.

The Kinetic Water Ram uses a burst of compressed air that drives a shock wave (kinetic energy) through water to break up stoppage. It's particularly useful when the stoppage is on the far side of a drum trap or series of tight bends, since the shock wave can travel around bends without losing its force.

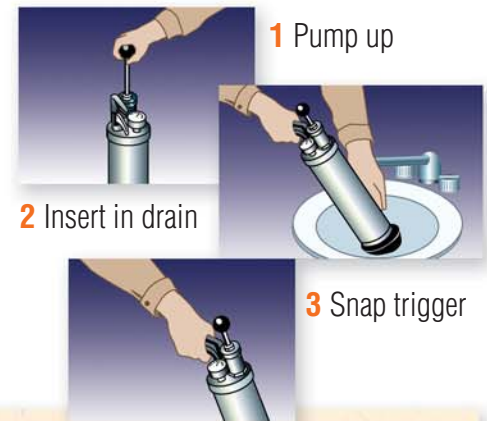


The Ram has a self-contained pump and pressure gauge, so you can hit the stoppage with just the right amount of force. You get instant impact with no build-up of pressure in the plumbing system. The force is transmitted through water, so it's not affected by stacks or vents.

An optional toilet attachment (KR-CA) screws onto the front of the Ram and enables you to position the cone in the bowl to get a tighter seal. As a result, you can strike the blockage with greater impact and no splash back.



**Simple to operate ...
Anyone can use it**



Specifications:

- 16 gauge plated cylinder tested for up to 600 lbs. pressure.
- 100 lbs. gearless pressure gauge provides pinpoint pressure control.
- Built-in air compressor easily pumps up to desired pressure.
- Flexible cone seals drains ranging from 1-1/4" to 4" diameter.
- Equipped with Schraeder valve for use with external air compressor when clearing difficult stoppages.
- Standard fittings include caulking hose, 4" tapered rubber cone, and five tapered rubber plugs for sealing openings from 1-1/4" through 4".
- Optional accessories include carrying case, toilet attachment, 6" tapered rubber cone, 1-1/2", 2", 3" and 4" expansion plugs, universal faucet adapter, water supply hose, and check valve.