

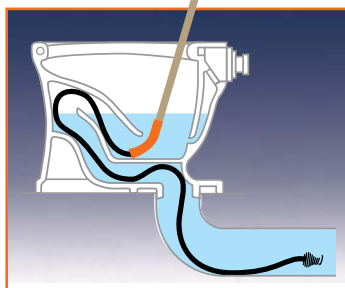
# Closet Auger

## Six Foot Teletube™

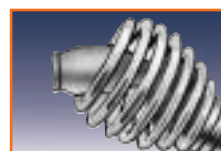
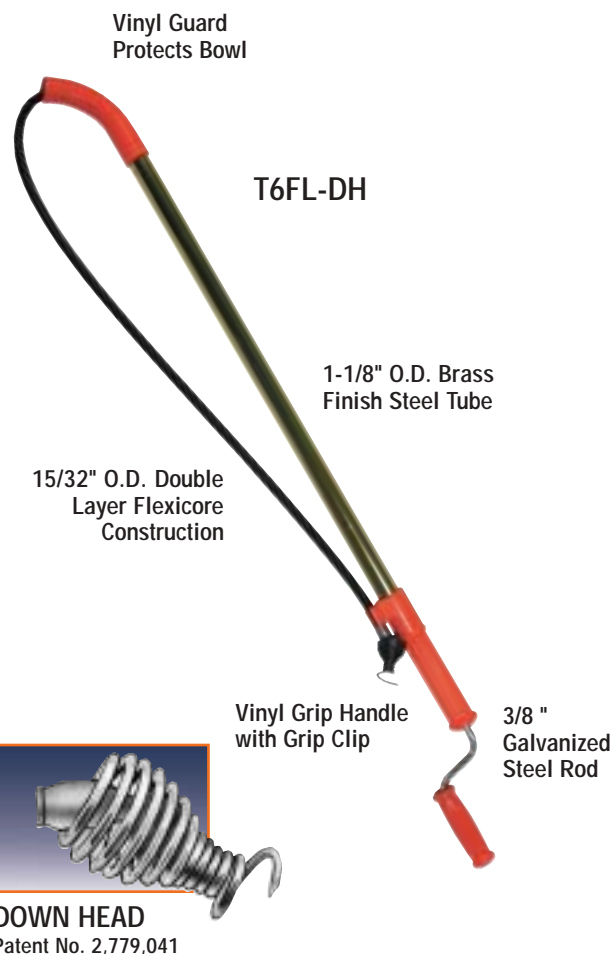
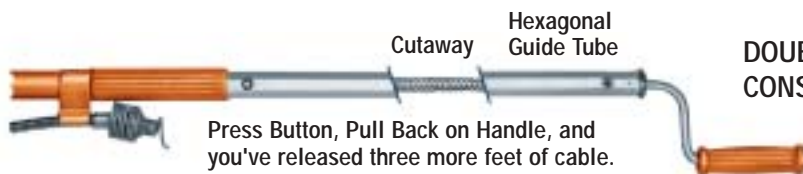
Makes conventional six foot augers obsolete, because it has three feet telescoped into a guide tube until you need it. After you've worked the first three feet into a bowl, you can go three feet farther simply by pressing a button and pulling the crank handle.

Outer tube is a big 1 1/8" in diameter; guide tube is even tougher than the steel rod we use in our 3FL closet augers. Teletube weighs just a little more than a 3FL.

Other features include vinyl bowl guard, vinyl grip handle, die cast aluminum turning handle, and "Grip Clip" for attaching cable.



Catalog Number		Weight Pounds
T6FL	Down Head	5-3/4
T6FL	Regular Head	5-3/4



**DOWN HEAD**  
Patent No. 2,779,041



**DOUBLE SPRING CONSTRUCTION**

**The toughest tools down the line.™**

**General** / **General Wire Spring Co.**  
**PIPE CLEANERS**

1101 Thompson Avenue • McKees Rocks, PA 15136 USA  
800-245-6200 or 412-771-6300 • Fax: 412-771-2771  
www.drainbrain.com • e-mail: info@drainbrain.com