

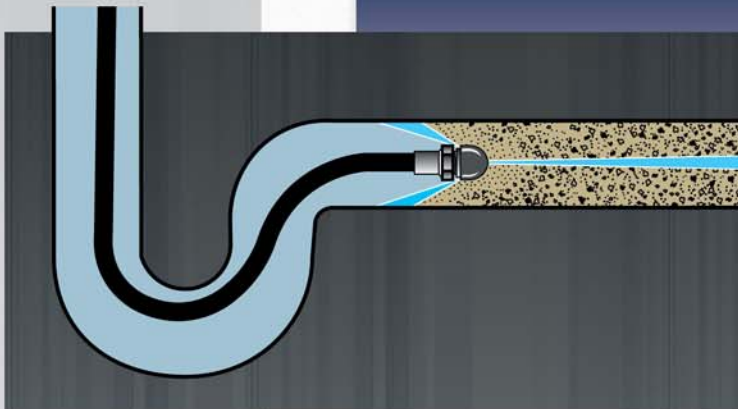
# J-1400 Electric Jet

This compact, easy-to-use jet generates 1500 psi at 1.7 gallons per minute, yet pulls only 13 amps. It's powered by a 1-1/2 hp dual capacitor sealed motor with an in-line ground fault circuit interrupter. The J-1400 is equipped with Vibra-pulse® on demand to work the hose around tight bends in small lines. This unique feature allows the flow rate to remain the same whether Vibra-pulse® is on or off. Safety features include a thermal relief valve, inlet filter, and back flow check valve. An optional spray wand is available.

*Don't let tight spaces stop you!*

## J-1400 Specifications:

<b>Pump:</b>	Triplex w/Vibra-pulse®
<b>Pressure:</b>	1500 psi
<b>Flow:</b>	1.7 gpm
<b>Motor:</b>	1-1/2 hp 13 amp w/GFCI
<b>Weight:</b>	71 lbs. (32 kg)
<b>Dimensions:</b>	22" L x 14" W x 13" H (56 cm x 36 cm x 33 cm)



## Vibra-pulse®

This is what separates General's Jet Set from ordinary pressure washers. Vibra-pulse® breaks the initial tension between the surface of the hose and the walls of the pipe, thus helping the hose slide around tight bends and propel itself farther down the line. Vibra-pulse® increases the cleaning power of low pressure electric jet machines, and is particularly useful in jetting around bends in small drain lines.